

R-F-M

THE MIDLANDS MART

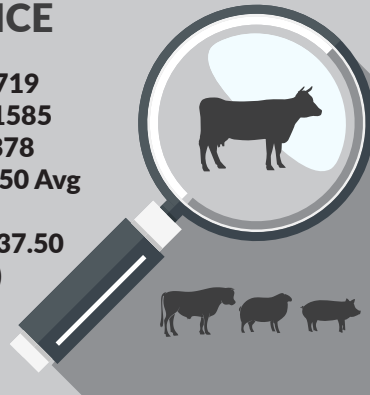
— RUGBYFARMERSMART.COM —

The Charolais Pavilion, Avenue M, Stoneleigh Park,
Kenilworth, Warwickshire CV8 2RG
02476 697731 | www.rugbyfarmersmart.com | 43/139/8013
Office hours: Monday to Friday - 9.00am - 5.00pm
Opening Time: Gates open at 5.30am until further notice

MARKET REPORTS FOR MONDAY 5TH JULY 2021

MARKET AT A GLANCE

Prime Steers to 260p/kg & £1719
Prime Heifers to 262p/kg & £1585
Cast Cows to 188.5p/kg & £1378
**Prime Lamb SQQ 251p/kg (1850 Avg
£106)**
Prime Lambs to 292p/kg & £137.50
Ewes to £215 (1314 Avg £112)



THURSDAY 15TH JULY SALE OF STORE CATTLE

Catalogues & Entry Forms available by post, email or on the website
www.rugbyfarmersmart.com | admin@rugbyfarmersmart.com

CATTLE: 73 FORWARD



Perhaps as dear as we have seen them. With many R Grades well past the £4 mark this week. A nice yarding with numbers from across the country in the aisles.

Steers;

Some super finish and strength in the yarding topping out at 260p/kg for U grade Steers whilst heavy Steers to 256.5p/kg from G R Fountaine & Son, Buckingham. Smart fed R Grades to 233p/kg from GJ & MP Allen, Hethe with the majority 225 to 230p/kg. O+ Grades upto 220p/kg. In the lump a top of £1719 from G R Fountaine & Son bought by Mutch Meats Ltd, Witney with Messrs Allen £1583 and J W Pickford none Assured at £1554.

Heifers;

Top today a strong loined U grade from J & R Lowe, Rugby selling to a swift 262p/kg bought by P Reid Butchers, Coventry. Smart shape from P Jarrom saw 255p/kg and with F Hodgkin weighted Heifers to 240p/kg. In the lump a top of £1585 from G R Fountaine & Son whilst F Hodgkin took £1524, Messrs Lowe £1507. Meat a key and many O grades operating around the 218 to 225p/kg mark.

Cows;

Simply flying with all genuine Cows on show albeit some falling under 42 months having calved. Top today a full meated R Grade Hereford from DJ Hull & Partners, Essex and taking 188.5p/kg with strong Blonde shapes from R D Masters, Solihull at 183p/kg equal with DJ Hull & Partners. Even the very old Cows trading 150 to 170p/kg. Top gross £1378 for a heavy Charolais from J & IJ Tivey with the best of the Herefords £1295 and £1261. Bulls today seeing a lean Blonde to £1200 from R D Masters, Solihull. Many more needed next week.

Auctioneer: Tom Wrench

YARDSMAN WANTED

Due to the continued Expansion of RFM, we seek a self-motivated Yardsman to take weekly charge of Sales and preparation of Sales yards.

Working predominantly within the Market the Candidates will be responsible for the smooth running of Sales from setup to the final cleaning and Sale conclusion.

Competence working with Stock is essential together with 'Can do' attitude. The Candidate should be detailed in their approach and able to work on their own initiative.

Starting each week on a Sunday lunch time the position is for a full time person with hours to suit save as for attendance on Sundays and Sale days.

To discuss in confidence please email t.wrench@rugbyfarmersmart.com or Call Richard Ellis on 07973962887

STEERS & BULLS

Top prices per Head				FA
Limousin x	670kg	£1719	G R Fontaine & Son	Y
Charolais x	679kg	£1582	GJ & MP Allen	Y
Charolais x	731kg	£1553	J W Pickford & Son	N
Limousin	595kg	£1547	P M Jarrom	Y
Simmental	686kg	£1544	GJ & MP Allen	Y

Top prices per Kilo				
Limousin	595kg	260ppk	P M Jarrom	Y
Limousin x	670kg	256.5ppk	G R Fontaine & Son	Y
Sussex	552kg	239ppk	Passmore Brothers	Y
Charolais x	679kg	233ppk	GJ & MP Allen	Y
Simmental	602kg	227ppk	M A Lee	Y

HEIFERS

Top prices per head				FA
Limousin x	698kg	£1584	GR Fontaine & Son	Y
Limousin x	636kg	£1523	F Hodgkin	Y
Limousin	575kg	£1507	J & R Lowe	Y
Limousin x	653kg	£1495	F Hodgkin	Y
Aberdeen Angus	613kg	£1407	J & I J Tivey	Y
Top prices per kilo				
Limousin x	575kg	262ppk	J & R Lowe	Y
Limousin x	543kg	255ppk	P M Jarrom	Y
British Blue	636kg	239.5ppk	F Hodgkin	Y
Limousin	451kg	234ppk	AE & AM Tacy	Y
British Blue	613kg	229.5ppk	J & I J Tivey	Y

**PLEASE COULD ALL VENDORS BOOK IN STOCK,
EITHER BY A QUICK CALL, TEXT OR EMAIL THANK YOU!**

Office: 02476697731 | Email: admin@rugbyfarmersmart.com | Tom: 07774723758

COWS

Top prices per head				
Charolais x	840kg	£1378	J & I J Tivey	Y
Hereford	744kg	£1295	DJ Hull & Partners	Y
Hereford	783kg	£1261	DJ Hull & Partners	Y
Hereford	720kg	£1238	DJ Hull & Partners	Y
Top prices per kilo				
Hereford	601kg	188.5ppk	DJ Hull & Partners	Y
Hereford	665kg	183ppk	DJ Hull & Partners	Y
Blonde	656kg	183ppk	R D Masters	N
Hereford	640kg	180ppk	DJ Hull & Partners	Y

SHEEP: 3191 FORWARD

SPRING LAMBS: 1849

FORWARD SQQ 251P/KG AVG £106

A nice number in the yard today and all buyers in attendance albeit lethargy from buyers whom reported slow sale. An Sqq of 251p/kg representing a steady in trade albeit still ahead of Deadweight quotes. Best end lambs holding a real premium but quality thin on the ground today. Top on the day 292p/kg for Chris Price, Monmouth returning to Warwickshire to show top quality stock. S F Taylor, Coventry 40kg to 290p/kg and Philip Jones, Flecknoe 38kg to 289p/kg. G R Fountaine & Son 39kg to 288p/kg. Heavies a nice trade as Home trade sales prove easier than export, seeing a top of 263p/kg for weighted 50.5kg from E J Taylor & Son. Weight from FJ Tombs & Son also 262p/kg and the Warner Bros 47kg to 260p/kg. Export lambs generally harder cashed but topping at £118.50 for 43kg from Will Gaydon, £117.50 for 42kg from C L Bevin with C D Harrison & Sons 41kg to £117 and H Collins & Son £117. Nice light Export weights to 41kg from Humphrey Livestock at £116.50 and 40kg to £116. Overall a top of £137.50 for 55kg today from FJ Tombs & Son with 51kg to £135 and J Herod, Bedworth 57kg at £135. Plenty of Lambs over £130 and weight well chased as Home trade cutting lambs give Exporters an alternative.

Auctioneer: Tom Wrench



SPRING LAMBS : UNDER 45.5kg SQQ 251p/kg

Per Kilo			
Charollais x	39.00kg	292ppk	C Price
Beltex x	40.00kg	290ppk	S F Taylor
Texel x	38.00kg	289ppk	P Jones
Texel x	39.00kg	288ppk	GR Fountaine & Son
Texel x	40.00kg	285ppk	MG & SM Grindal

Per HEAD			
Texel x	43.50kg	£118.50	W Gaydon
Texel x	42.00kg	£117.00	C L Bevin
Charollais x	44.50kg	£117.00	C D Harrison & Sons
Texel x	45.50kg	£117.00	H Collins & Son
Texel x	41.50kg	£116.50	Humphrey Livestock

SPRING LAMBS : OVER 45 kg

Per Kilo			
Charollais x	50.50kg	263ppk	E J Taylor & Son
Texel x	51.50kg	262ppk	F J Tombs & Son
Cheviots	47.00kg	260ppk	Warner Bros
Charollais x	46.00kg	259ppk	W E Russell
Charollais x	49.00kg	258ppk	EH Dewes & Son

Per HEAD			
Charollais x	55.50kg	£137.50	FJ Tombs & Son
Charollais x	57.00kg	£135.00	J Herod
Texel x	51.50kg	£135.00	FJ Tombs & Son
Charollais x	53.00kg	£135.00	FJ Tombs & Son
Charollais x	50.50kg	£133.00	E J Taylor & Son

NEXT CALF SALE
MONDAY 12TH JULY 11AM

CULL EWES: 1313 FORWARD



An excellent yarding with Ewes from the South East coast to the North East represented. Frankly a monumental trade with all grades a step up with only lean Ewes harder to sell. Top today dominated by Rams with a huge Texel from K Butcher making £215 and his rather knock knee'd brother £200. Strength in the Ewes not a great as we have seen last week but Texel ewes seeing pens of 10 to £168 from PA & K Barnes who also sold at £164, £160 with S F Taylor Beltex x to £159. P F Edwards Stratford Upon Avon £154 and Greenfields £153.50. Strong White Faces on the whole over £148. Suffolks today topping at £146 for K Butcher with others £143.50 from E H Dewes and T R Tame & Son, Shipston on Stour to £140.50. Suffolks generally either side of the £130 mark with weighted Ewes over £135. Mules today topping at £131 for G Weston, Thame with others £130 for Evergreen Enterprises, Lutterworth. Mules with weight regularly over £120 and smaller light Ewes £110 to £120. Lean breaking Ewes the hardest to cash albeit well ahead of anybody's budgeted expectation. Perhaps the trade of the year today.

Auctioneer: Tom Wrench

EWES

Texel x	£215	K Butcher	Texel x	£159	S F Taylor
Texel x	£205	K Butcher	Texel x	£154	P F Edwards
Texel x	£168	PA & K Barnes	Texel x	£153.50	Greenfields
Texel x	£164	PA & K Barnes	Texel x	£150	GR Fountaine & Son
Texel x	£160	PA & K Barnes	Texel x	£150	C & D Hunt

DROVERS WANTED

To work every Monday including bank holidays
Experience with livestock preferred must be able to work as part of a team.
To find out more details please call Sophie on 02476 697731 or email
admin@rugbyfarmersmart.com

TIMING

Prime Cattle 9:45am, Calves (bi-weekly) 11am
Sunday deliveries strictly before 3pm

WANTED

Experienced person required to work on 1300 acre arable & sheep farm near Towcester.

Ring Robert for more details on 07762164552

FOR SALE


Tri Coloured Collie Pups
From working parents
ready Mid July
Microchipped & have had first vaccination
Call 07533261481

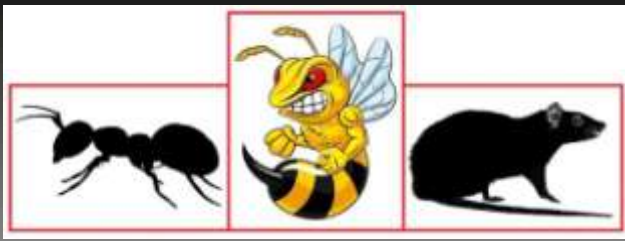
MOWING GRASS FOR SALE

5 ACRES MOWING GRASS at Rectory Road, Old Arley. OFFERS INVITED

Details from Margetts, 12, High Street, Warwick, CV34 4AP (ref RJW)

Tel: 01926 496262, or e-mail :rjwyatt@margetts.co.uk “

S C and J Smith (family run business)
Mobile sheep  dipping
Warwickshire and neighbouring counties
Small and large numbers
From 50p per sheep
Tel: James 07904 042318



RDB Pest Control

Reliable | Trustworthy | Fast | Effective
Competitive Prices

Ryan Brunt

07922 091 459

www.rdbpestcontrol.co.uk

Why You Should Choose Us

- ✓ Cater for Red Tractor and Farm Assurance Schemes
- ✓ Wide ranging experience on Farms with existing agricultural customers
- ✓ Member of Warwickshire Young Farmers
- ✓ Fully qualified - Level 2 RSPH in Pest Control
- ✓ Trustworthy and security vetted
- ✓ Prompt, reliable fast response

A selection of sites where I have experience:

Police Sites • Local Airport • Farms • Warehouses • Offices
• Industrial Estates • Food Premises • Private Houses
Country Estates • Building Sites • Local Councils • Schools •
Day Nurseries • Care Homes


Farm insurance, the way it should be

We're a family-run business and pride ourselves on forging long term relationships with our farming and agricultural clients. Covering the Midlands, South West and South East, we deliver an extensive range of farm, agri business and equine policies tailored to you.

www.county-insurance.co.uk/farms

Farm & Equine **01865 844985**

General **01865 842084**

 Follow us [@County_Farm](https://twitter.com/County_Farm)



Independent Insurance Brokers County Insurance Services Limited. Address and Registered Office: County House, Glyme Court, Langford Lane, Kidlington, Oxon OX5 1LQ. Authorised and regulated by the Financial Conduct Authority (FCA) (FRN: 597267). Company registered in England No. 08411634

FOR SALE

Exceptional Collie pups for sale
Call 07999795001

FOR SALE

Hyline point of lay hens and growing
birds for sale.
Brown egg layers suitable for free range
or deep litter.
contact Mark Martin
on 07976 260 775

WE COVER SMALL FARMS, LARGE FARMS AND EVERYTHING IN BETWEEN



From sheep farmers to arable farmers.
Flower growers to poultry farmers.

NFU Mutual is proud to insure over 75% of UK farms with our Farm Select insurance. But we want more farms to benefit from great cover and local service. NFU Mutual has introduced Farm Essentials insurance - designed to meet the needs of smaller farms.

As your local agency, we are close by and can provide expert advice and hands-on support when you need it.

Call **Coventry Office** on **02476 444519**
NFU Mutual, 6 Eastwood Business Village,
Harry Weston Road, Binley Business Park,
Coventry, CV3 2UB



NFU Mutual
FARM INSURANCE



J B BARNETT
07506419043
 CULTIVATING IDEAS FOR GROWTH

Aspects of contracting Available:

- Mowing
- Tedding
- Raking
- Buck Raking
- Forage Wagon, chopped at 34mm
- FYM Spreading
- Slurry Spreading with Dribble bar
- Ploughing
- Heavy & Light Cultivations
- Cereal Drilling
- All Aspects of Trailer work
- Tractor & Man Available with Lots of experience

Give us a call to get the wheels turning!

FINISHING CATTLE? GROWING CATTLE? FEEDING SHEEP? **BERRYSTOCK FEEDS**



Do you want **HIGH PERFORMANCE, COST EFFECTIVE, FULLY ASSURED and COMPLETE FEEDS?** Then contact **BERRYSTOCK FEEDS:**

Tel: 01788 890320 E-Mail: john@berryfieldsfarm.co.uk Web: www.berrystockfeeds.co.uk
 BERRYFIELDS FARM, DAVENTRY, NN11 8NP

T.A.R HIRE

- **FOR HIRE:**
- **10 & 14 TON REAR MUCK SPREADERS**
- **12 TON TRAILERS WITH SILAGE SIDES**
- **ROAD SWEEPER**
- **FLAT TRAILERS**
- **GRASS TOPPERS**
- **CONTRACT MUCK SPREADING SERVICES**

CONTACT:
DAVENTRY (ROB) – 07801791212
HINCKLEY (ALAN) - 07802951179



RFM

THE MIDLANDS MART

—RUGBYFARMERSMART.COM—

FORTHCOMING SALES

THURSDAY 15TH JULY

SALE OF STORE CATTLE

**Vendors who are wishing to sell stock
please feel free to contact:**

Tom Wrench - 07774 723758

Gareth Doyle- 07902 330623

Tim Webster- 07437 101163

who will gladly make

A FREE ON FARM VISIT & VALUATION



Follow us on social media:

Facebook & Twitter - @RFMMidlandsMart

Instagram - rugbyfarmersmartltd